

CAST POLYMER SHOWER BASE FORM

email to: orders@bciacrylic.com

CHOOSE:

Questions? Call us at: **800-963-8827**

Order

Quote

Print

Reset Form



1

Company: _____ Order Date: _____

Name: _____ Phone: _____

Job Name/PO#: _____

Special instructions: _____

2

Choose Your Desired Shower Base Color

White

Biscuit

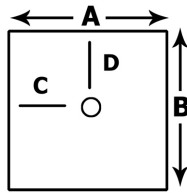
Almond

Ice Gray

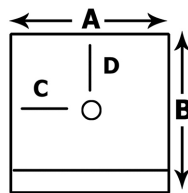
Sandbar

3

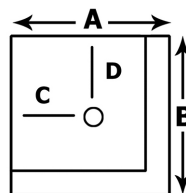
Choose ONE Overhead View That Looks Like Your Specific Shower Base



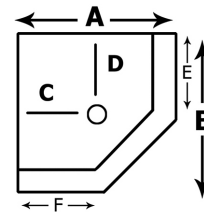
No Threshold



Single Threshold



Double Threshold



Neo Angle Threshold

Custom

(Please attach drawing in your email. Mark finished (exposed) edge with an "X"

4

Write in the Measurements for Each Letter Above (E & F only if applicable)

Sizes up to 84" x 120"

A:

The back (soap) wall sits atop side "A"

B:

Measurement Includes your chosen threshold below. Excludes ramp.

C:

Measure "C" and "D" to the center of the drain. May not be less than 7" your chosen threshold (below) or more than 60" to center drain.

D:

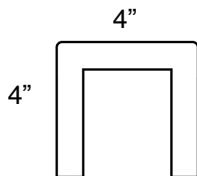
E:

"E" and "F" are for Neo Angle diagrams only

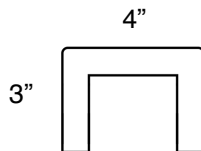
F:

5

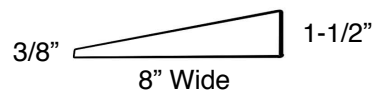
Choose ONE Side-View Diagram for Your Threshold (a.k.a. "Curb")



STANDARD
Most Popular



SHORT
Easier to step over



RAMP
Roll-in Access

No Threshold
(Floor slab 1-1/2" thick)

Product Options



Single Threshold Unassembled. Floor slab and threshold are separate and easier to carry on the jobsite. Items are then fused in the field with special adhesive. Shipping unassembled gives option to cut on site with a masonry circular saw blade.



Dams unassembled.

NOTE: Ramps are always unassembled. NEO Angle and Double Threshold bases are always assembled.

Need help? Contact your friendly BCI Customer Success Representative at **800-963-8827**